



# eXact<sup>TM</sup> 2

Next generation portable  
color measurement



# X means bringing your workflow together.



## This is eXact 2

The days of struggling to achieve color tolerances, fighting substrate costs, dealing with short supply, recruiting operators with no time to train them, low measurement speeds, and slow instruments - are over!

In the modern production environment, printers, packaging converters, and ink suppliers need superior color control and efficient verification of customer requirements. While handheld color instrumentation can often satisfy much of this need, not all instruments are created equal.

Today's professionals require a connected solution that is fast, precise, easy-to-use, and works with multiple substrates to streamline workflows, reduce waste, and free up capacity to generate revenue.

The stand-alone spectrophotometers of yesterday will not take you into the future of color measurement while providing superior color quality - the eXact 2 will.

Redesigned to meet the needs of print, ink, and packaging professionals, the eXact 2 is the next generation in color measurement. Smart and sophisticated in its design, the eXact 2 offers Mantis™, first-to-market video targeting technology.

The eXact 2 is at the center of the solution you need for 100% confidence in color quality and the ability to support continually evolving customer requirements.

“To maintain brand color, we have to validate and report on every job we do and every label we produce. eXact 2 is a device we can use press side. It allows the operators to work without leaving their area and gives us the kind of stringent reporting we need.”

~ Steve Lehning  
Pre-Press Color Manager, GR Label



# With eXact 2 we've reimaged color measurement to deliver the most integrated and innovative workflow for maximum performance and efficiency.



## Measure the Right Spot, Every Time

With an on-board high-resolution camera and Mantis video targeting technology, what you see is what you measure.



## Manage Your Workflow from eXact 2

See ColorCert® job quality results on the device and simplify ink workflows with InkFormulation Software (IFS) integration.



## Inspect Patches with Confidence

eXact 2's Digital Loupe functionality provides dynamic zoom capabilities to capture and inspect the right spot without measuring print defects and saves an image of the measurement.



## Access Color Standards on the Device

Retrieve preloaded solids, neons, and pastels, plus connect with your PantoneLIVE subscription to acquire thousands of additional colors across a variety of substrates.



## Spend Less Time Looking Through Menus

Get up to speed quickly and work with fewer errors with eXact 2's ergonomic design, adjustable tilt screen display, and intuitive 'two-taps or less' menu.



## Toggle Between Spot and Scanning Modes

With a single tap, switch from measuring individual patches to scanning color bars using integrated wheels and the on-board camera for visual look ahead and color bar recognition.



## Minimize Ink Contamination

Measure draw-downs and proofs without tracking ink using eXact 2's non-contact measurement area.



## Manage Your Entire Fleet of Devices

Get up-to-date intelligence on device health and service history, plus remotely deploy firmware updates, color libraries, and standards to your entire fleet with X-Rite Link dashboard.\*



## Work Untethered

Drive your color measurement processes directly from eXact 2 without being tied to a console or computer with on-board Wi-Fi.



Featuring unrivaled measurement technology in an intelligent interface, eXact 2 offers best-in-class accuracy and speed.

#### Adjustable Screen

With a 30% larger tilt screen and double the resolution of previous generations, viewing and navigating a device has never been easier.

#### Robust Design

Built with a lower center of gravity and comfortable grip, the eXact 2 has gone through rigorous testing and withstands dusty environments and messy ink kitchens.

#### On-board Wi-Fi

Faster, more secure, and with a greater range than Bluetooth, the eXact 2 enables operators to connect to QC and formulation software from anywhere in your plant.

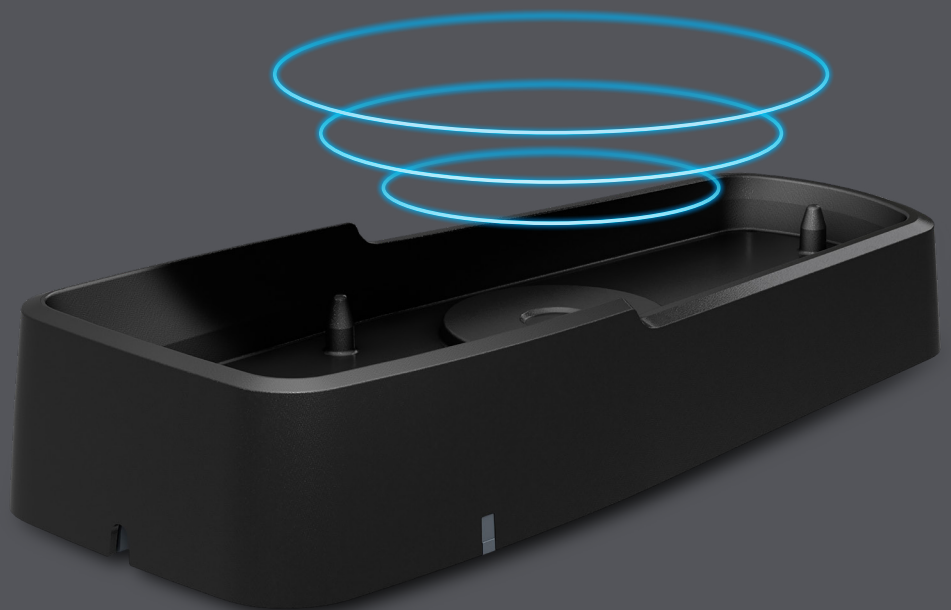
#### Switchable Polarization Filter

Measure multiple substrates from flexible film to folding carton board with a single device.



#### Improved Docking Station

Features protected calibration tile and QR code to ensure accurate measurements using any eXact 2 docking station. Incorporates the latest in wireless charging to reduce clutter.



X means ...



For Ink Suppliers

... faster formulation  
and total accuracy.

Ink companies need a handheld measurement solution that is tailored to their unique needs, allowing them to communicate color data to printers and converters.

The non-contact measurement area prevents wet ink contamination and the need to re-measure. In addition, the eXact 2 features My Tool, a fully customizable tool designed specifically for the ink kitchen to help get the job completed quickly and with less waste.

Close integration with X-Rite's InkFormulation Software, enables ink suppliers and packaging converters to accelerate color development through better match performance and reduced proofing. InkFormulation's unique formulation capabilities save time and money, formulating inks for accurate color, the first time and every time.

## For Commercial Print and Packaging Converters

... measuring color on a wide variety of substrates, minimizing material cost, and keeping up with color specifications and design trends.

Printing materials are expensive and difficult to procure. With built-in scanning and an intuitive design, the eXact 2 helps operators get to make-ready color in less time, saving wasted substrate and ink while maximizing press output across a shift. eXact 2 Plus enables packaging converters to measure paper and flexible film substrates with a single device, eliminating the need for multiple devices and reducing paper.

With eXact 2, printers and converters can meet quality standards 17% faster than alternative solutions to make even the most color-critical customers happy. The eXact 2 is equipped with a “two-taps or less” touch-screen interface and on-board high-resolution camera, which powers Mantis video targeting technology and the unique Digital Loupe feature. Operators can zoom in on the measurement area, inspect patches, analyze dot gain, read plates, and save an image of a color.

eXact 2 comes with on-board digital color standards, embedded Pantone libraries, and direct access to PantoneLIVE. With this on-board functionality, operators can access thousands of the latest standards to meet customer color needs across a large variety of paper, film, and paperboard substrates and stay on top of color trends.

eXact 2 also offers the very best formulation and quality control tools and reporting capabilities. With ColorCert software integration, ColorCert jobs are displayed instantly on the device, helping operators cut make-ready time and hit color standards fast. On-screen scores also create more consistent quality results between operators and make it faster and easier to train new staff.

Wi-Fi connectivity with X-Rite Link is a game changer for busy pressrooms that need to manage a fleet of devices. This revolutionary dashboard provides real-time insight into device status and ensures all devices are NetProfiled and ready to go with the latest firmware.

Next generation portable color measurement

Learn more at [xrite.com/exact-2](https://www.xrite.com/exact-2)

# X-Rite Link

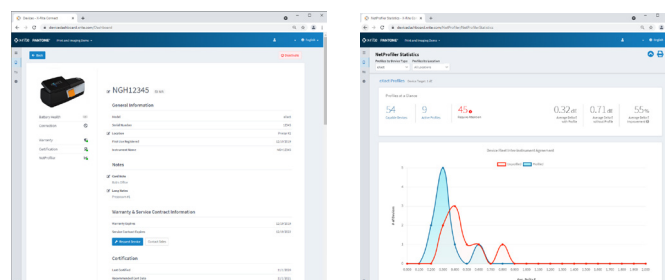
Connecting you and your devices for color confidence.

X-Rite Link is an innovative platform that enables you to achieve optimal performance from your X-Rite devices. It provides real-time insight into your entire fleet of color measurement devices to reduce manual management, ensure optimal device performance, and streamline the service process.

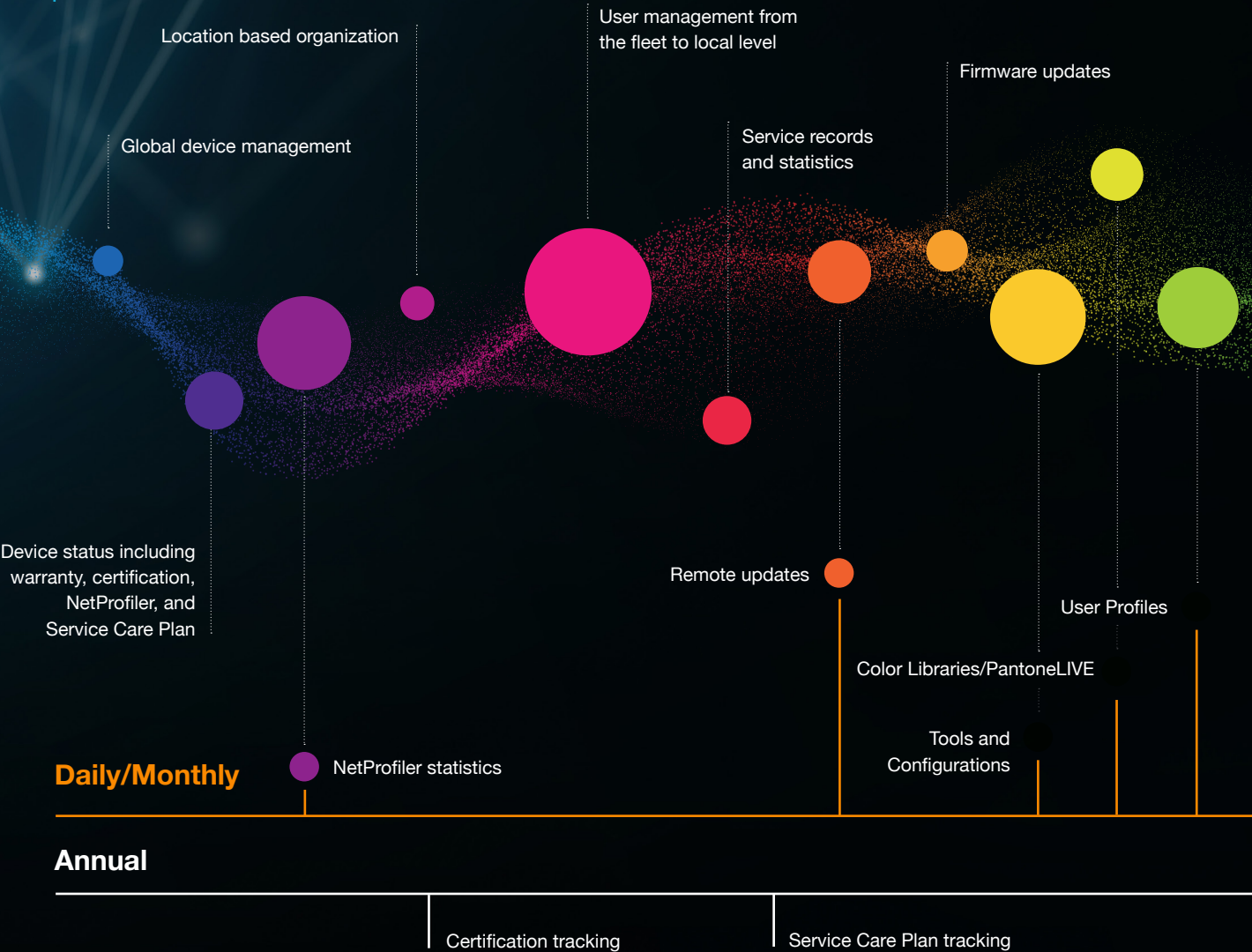


## A Complete User-Centered Solution

Stay aware of device health with X-Rite Link's intelligent diagnostics to ensure all your devices are ready when your users are. Whether you have one device or many, the dashboard provides complete visibility to monitor, configure, and manage your entire fleet of devices – around the globe – from one central location.







# Safeguard Your Investment

Creating the most comprehensive hardware and software solution in the industry, the eXact 2 ensures measurement accuracy with two-years of ISO:9001 compliant NetProfiler verification, X-Rite Link access, and end-to-end device protection. This includes protection against accidental damage and a loaner device.\*

\*with the purchase of a Service Care Plan



# Improve measurement experience with the eXact 2 portfolio.

The X-Rite eXact 2 portfolio is backed by decades of user-centered research, iterative testing, and analysis to be the world's most widely selected spectrophotometer solution. eXact is used by leading print and packaging brands, color consultants, and independent print shops alike. From densitometers to highly advanced spectrophotometers, for use with paper, film, or other substrates, eXact devices support evolving color measurement needs.





## Key Comparisons

Model	eXact 2	eXact 2 Xp	eXact 2 Plus
<b>Overview</b>	Designed for use on paper substrates, eXact 2 features advanced measurement technology, first-to-market Mantis video targeting, Wi-Fi connectivity, and an intelligent interface. More than just a color measurement tool, eXact 2 is the driving force behind an integrated software and IOT-enabled workflow to evaluate color.	eXact 2 Xp offers all features available on eXact 2, and also offers the ability to measure CMYK and spot colors on flexible films and other unique substrates by minimizing interference variation.	Unrivaled in speed, accuracy, and user-experience, eXact 2 Plus is the most versatile and powerful non-contact handheld spectrophotometer on the market. It combines the features of eXact 2 and eXact 2 Xp, plus the ability to evaluate ink and paper.
<b>Substrates</b>	Paper Board Folded carton Metal with white opaque BOPP* - white or clear	Paper Board Folded carton Metal with white opaque LDPE*/HDPE*/BOPP* - white or clear poly Flexible film Materials with polarized qualities	Paper Board Folded carton Metal with white opaque LDPE*/HDPE*/BOPP* - white or clear Flexible film Materials with polarized qualities
<b>Measurement modes</b>	Simultaneous M0, M1, M2, and M3	Simultaneous M0, M1, and M2	Simultaneous M0, M1, M2, and M3
<b>Additional functions</b>			Paper indices (whiteness, yellowness) Metamerism Absolute and relative color strength Opacity
<b>Additional graph</b>			Reflectance graph
<b>Pantone Master Libraries</b>	Formula Guide (solid coated, uncoated) and Pastels and Neon Guide (coated and uncoated)	Formula Guide (solid coated, uncoated) and Pastels and Neon Guide (coated and uncoated)	Formula Guide (solid coated, uncoated) and Pastels and Neon Guide (coated and uncoated)
<b>PantoneLIVE Dependent</b>	Optional	Optional	Included
<b>Sample storage, incl. image capture</b>	20 Digital Loupe images	20 Digital Loupe images	20 Digital Loupe images Mix of more than 50,000 samples and standards

\* LDPE - low density polyethylene. HDPE - high density polyethylene. BOPP - biaxially-oriented polypropylene.

# eXact<sup>™</sup> 2

Next generation portable  
color measurement

Learn more at [xrite.com/exact-2](https://xrite.com/exact-2)

## We're color experts.

We recognize that great color portrays great quality and know that your success hinges on the consistent and accurate production of this color. With so many places for color to go wrong, it can be hard to know how to get it right. That's where we can help. By blending the art and science of color, we help you achieve the highest level of color integrity so your product – and your customer's product – comes out ahead.

### **End-To-End Solutions**

We provide solutions that span the entire workflow, from design through production, to ensure your color is optimized.

### **Innovation**

Bridging the gap between color and appearance, we are blazing the trail for you to take your color operations to the next level.

### **Experience**

With 60+ years of experience in color manufacturing, our expertise spans a range of industries.

### **Passion**

Inspired by the great color our customers produce, our X-Rite color team provides quality support and training services.



X-Rite is either a registered trademark or trademark of X-Rite, Incorporated in the United States and/or other countries. PANTONE®, PantoneLIVE and other Pantone trademarks are the property of Pantone LLC. All other trademarks or registered trademarks are the property of their respective owners.  
© X-Rite, Inc. 2022. All rights reserved. L7-764-EN (06/22)